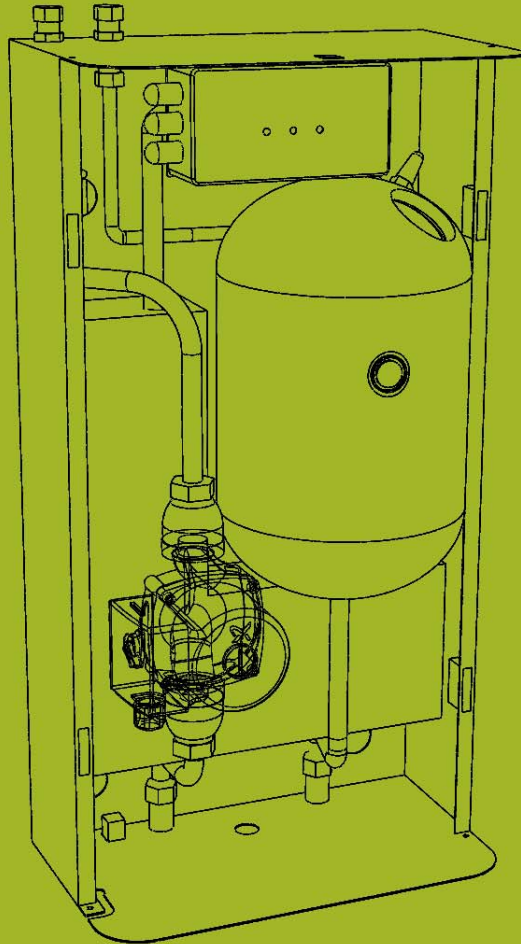
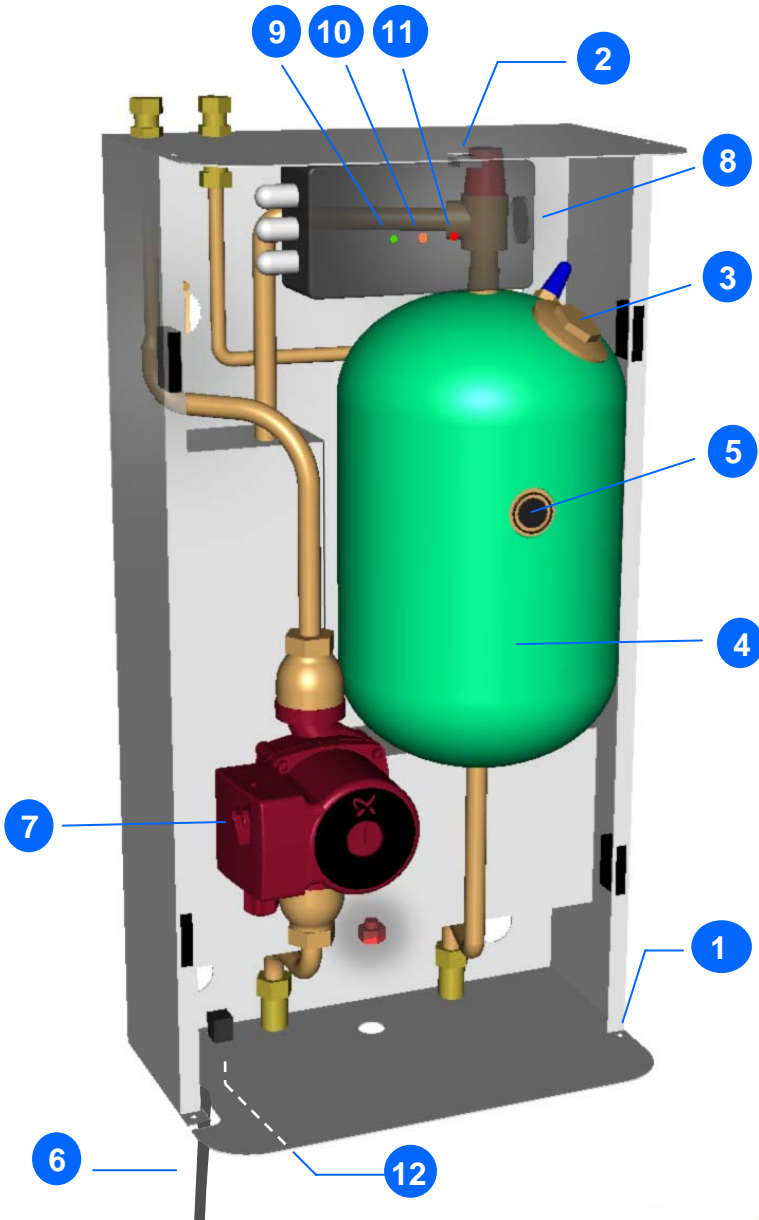


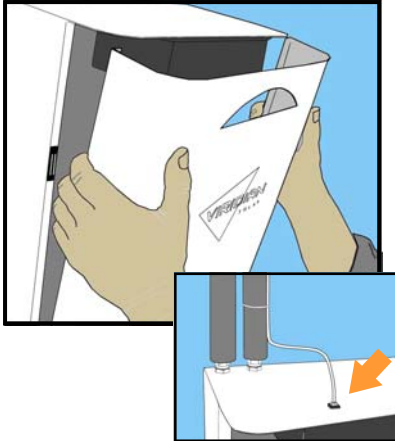
Commissioning Manual





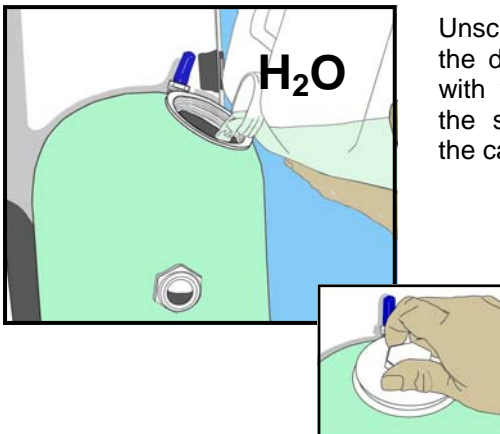
	No
1 Hole for retaining pin	4
2 Panel sensor cable socket	1
3 Drainback vessel cap	1
4 Drainback vessel	1
5 Level indicator	1
6 Power cable	1
7 Pump speed selector	1
8 Pump test button	1
9 Power indicator light	1
10 Pump indicator light	1
11 Error indicator light	1
12 Cylinder sensor cable socket	1

1



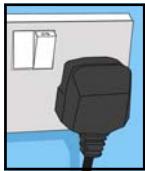
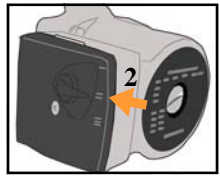
The control unit should be secured to the wall and properly plumbed. See Plumbing Installation Manual. If present, unplug four retaining pins (1) in the corners and remove the cover. Check that panel sensor and cylinder sensor cables are connected to the corresponding sensor sockets (2, 12), and that cylinder sensor is installed in accordance with the Plumbing Installation manual.

2



Unscrew the filling cap (3) on the drain-back vessel (4). Fill with water up to the level of the sight glass (5). Replace the cap (3).

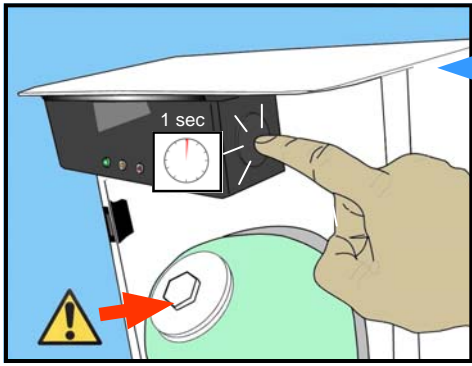
3



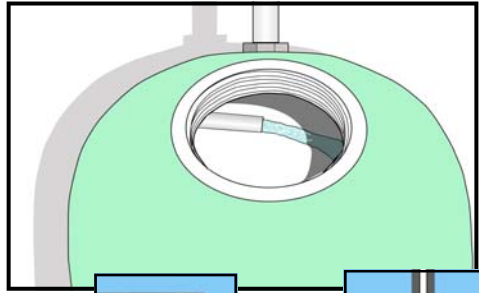
10 sec



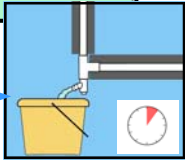
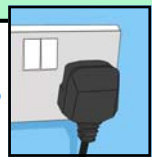
Ensure that the pump speed selector (7) is set to II. Switch on the power (6), and wait for 10 seconds to see if pump starts automatically. If not, press the test button (8) and hold for 1 second to energise the pump.



4

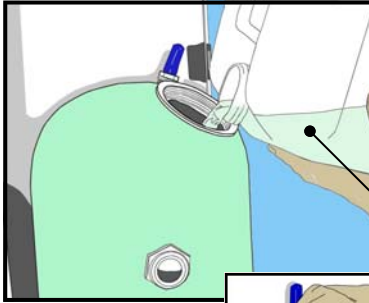


Listen for fluid flow, then unscrew the cap (3) to see water returning. Switch off power and drain system. Allow to drain fully or next steps will be difficult. Close drain cock.

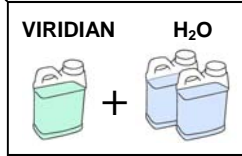
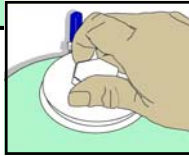


5 min

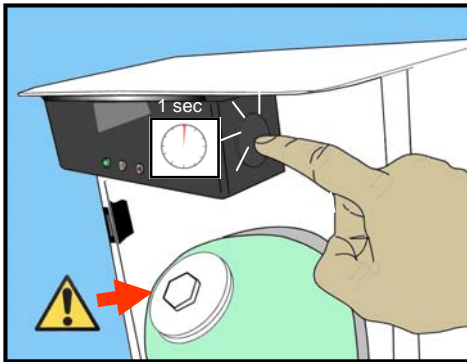
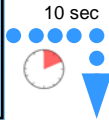
5



Unscrew the filling cap (3) on the drain-back vessel (4). Fill with system fluid up to the level of the sight glass (5). Replace the cap (3).

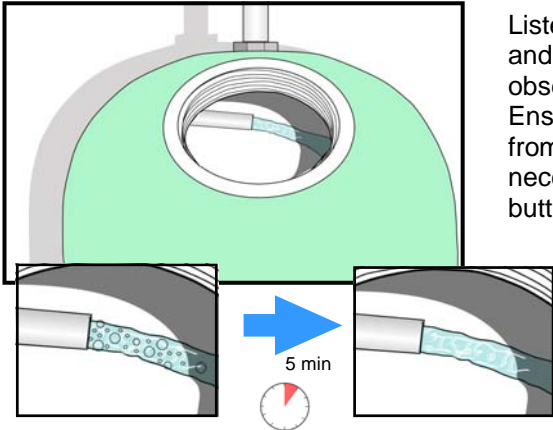


6



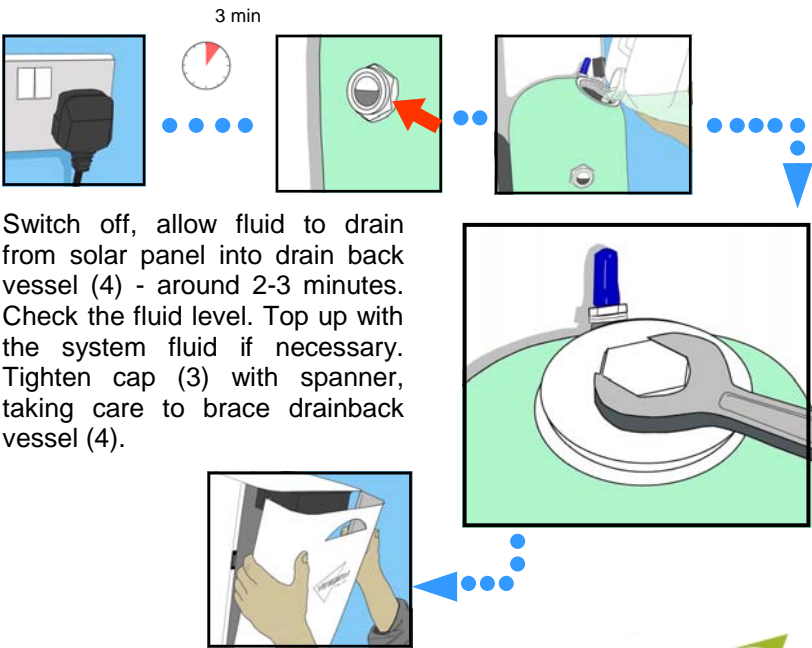
Switch on the power (6), and wait for 10 seconds to see if pump starts automatically. If not, press the test button (8) and hold for 1 second to energise the pump. It will run for at least four minutes, though it will stay on in bright weather.

7



Listen for fluid returning, and unscrew the cap (3) to observe condition of flow. Ensure that flow is free from bubbles - it may be necessary to press the test button again if flow stops

8



Switch off, allow fluid to drain from solar panel into drain back vessel (4) - around 2-3 minutes. Check the fluid level. Top up with the system fluid if necessary. Tighten cap (3) with spanner, taking care to brace drainback vessel (4).

Fault Finding

An error is indicated by a flash pattern in the red indicator light. The number of flashes per ten second period identifies the error.

Error	Flashes	Remedial Action
Pump Failure	1	Check pump, check for air-lock or blockage
Cylinder Sensor Open Circuit	2	Re-connect sensor cable to socket.
Cylinder Sensor Closed Circuit	3	Re-connect sensor cable to socket.
Panel Sensor Open Circuit	4	Re-connect sensor cable to socket.
Panel Sensor Closed Circuit	5	Re-connect sensor cable to socket.
Microcontroller Error	10	Power down for 10 seconds then on again. Call Viridian if problem persists.

Viridian Solar

Viridian Solar
Brook Lane
Bassingbourn
Cambridgeshire.
SG8 5NT

T 01763 853 007
F 01763 853 001

support@viridiansolar.co.uk
www.viridiansolar.co.uk