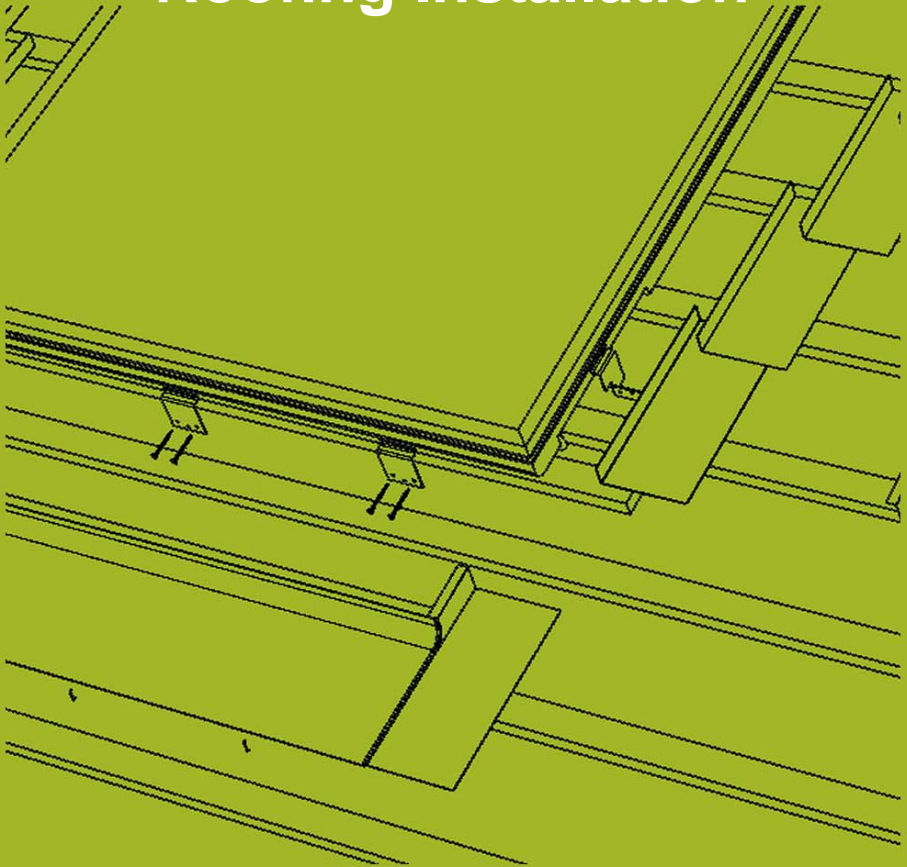
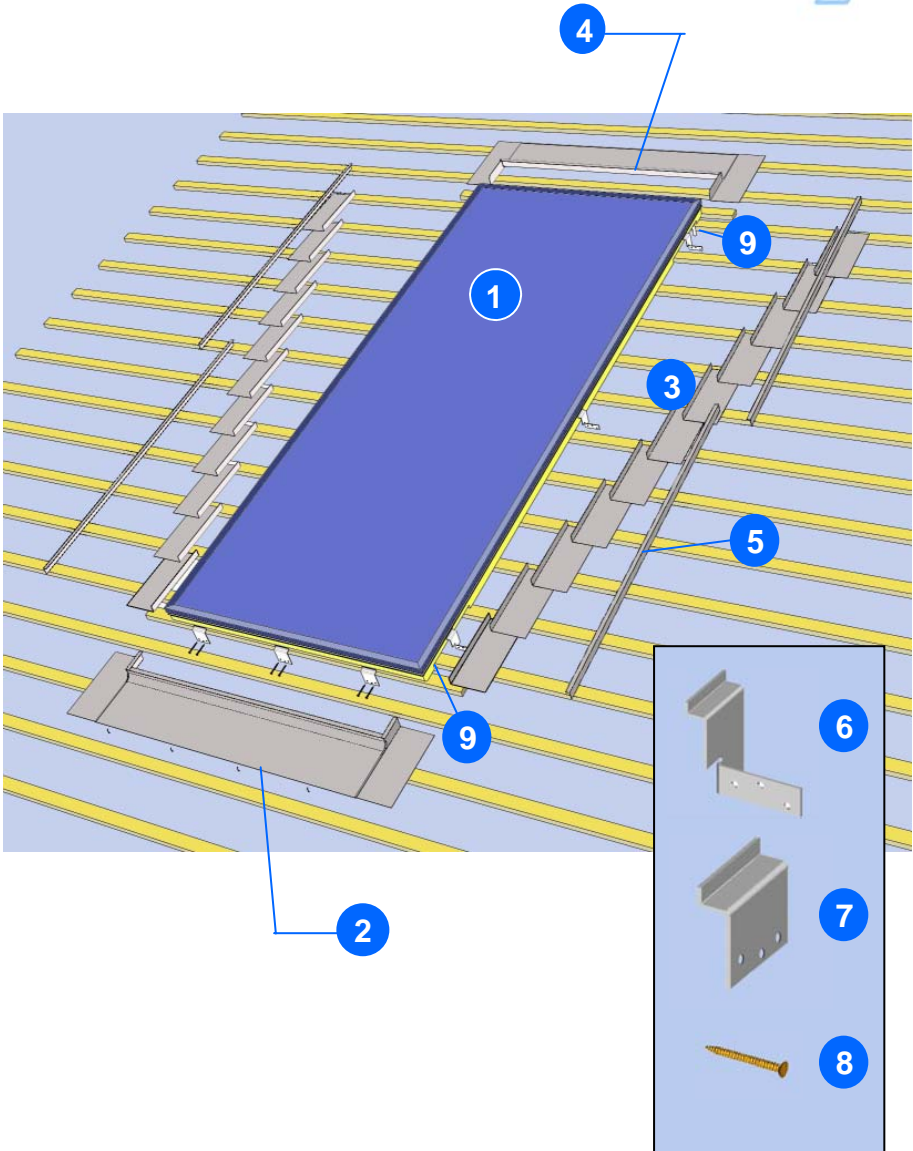


Clearline<sup>®</sup>

# Roofing Installation

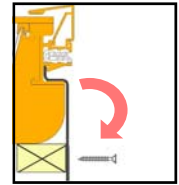
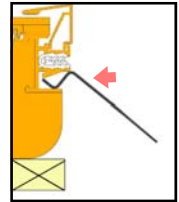
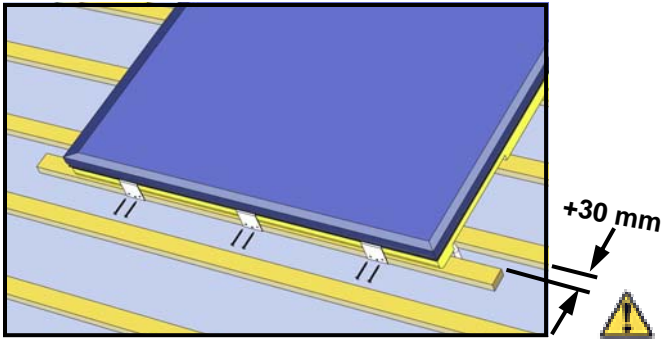




## Contents

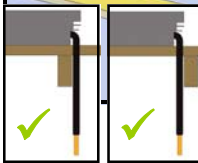
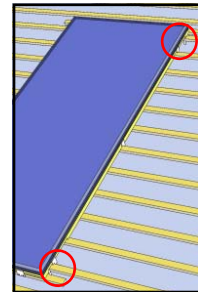
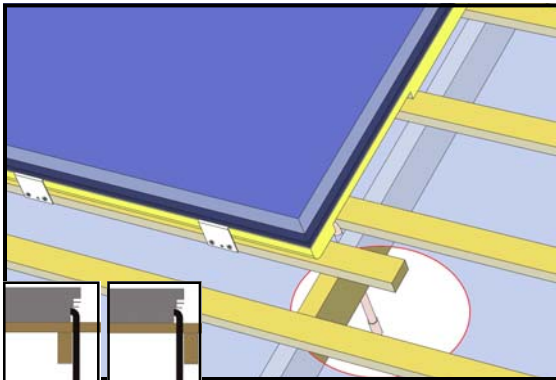
	V15	V20	V30
<b>1</b> Solar Panel	1	1	1
<b>2</b> Sill Flashing	1	1	1
<b>3</b> Soaker	12	18	22
<b>4</b> Top Flashing	1	1	1
<b>5</b> Soaker Covers	2	4	4
<b>6</b> Panel Fixing Brackets	4	4	6
<b>7</b> Panel Base Brackets	3	3	3
<b>8</b> 4 x 50mm Screw	14	14	18
<b>9</b> Flexi Hose	2	2	2

1

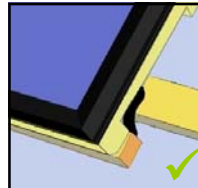
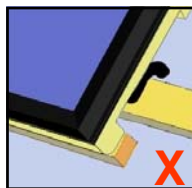


Fix support batten at bottom. Position panel so that flexi hoses (9) avoid rafters (see step 2). Fix panel with 3 panel base brackets (7) and 6 screws (8)

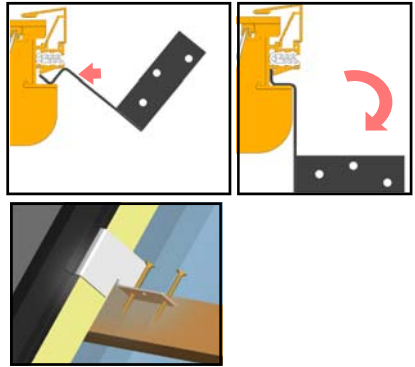
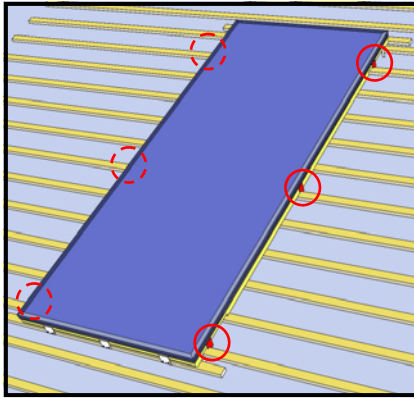
2



Pass flexi hoses (9) through membrane. Tape around hose to seal membrane. If avoiding batten, take hose downhill.

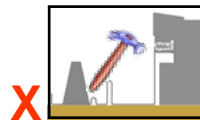
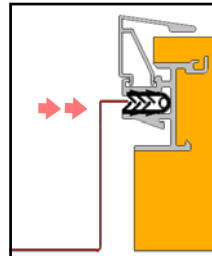
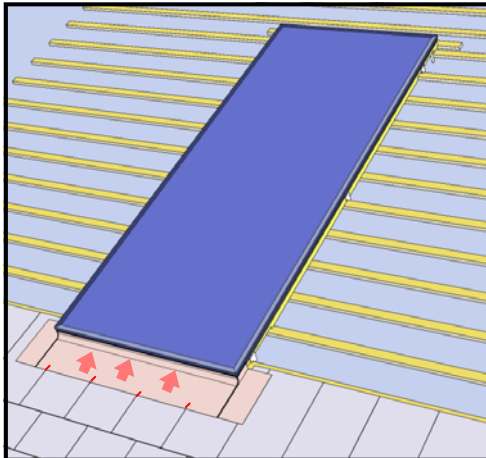


3



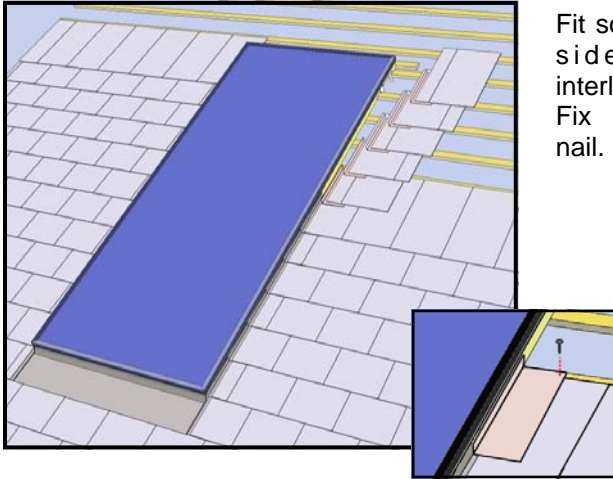
Attach panel fixing brackets (6) - 6 no. for V30, 4 no. for V20,V15 to sides of panel using 2 screws (8) per bracket.

4



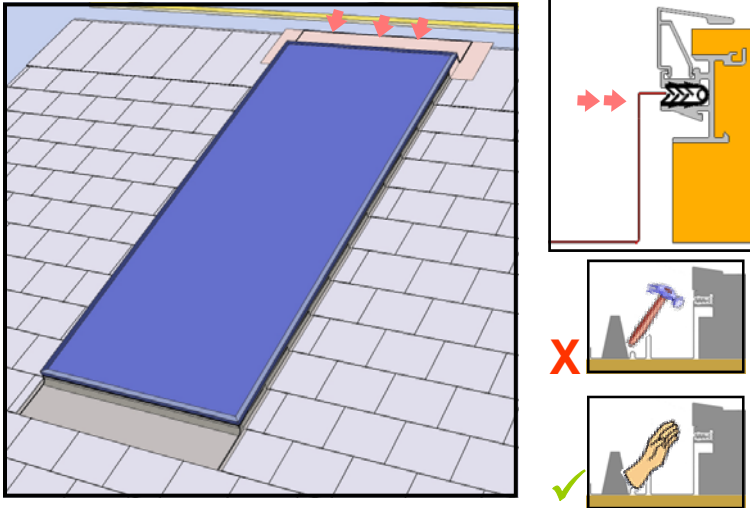
Push sill flashing (2) into rubber seal at bottom of panel. Retain lower edge with slate rivets

5



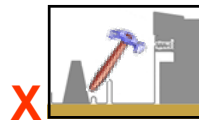
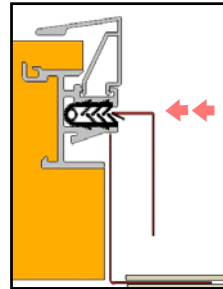
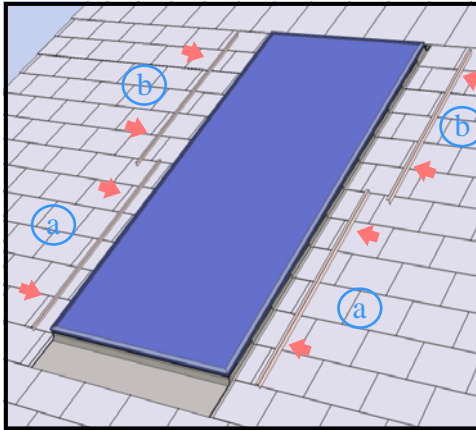
Fit soakers (3) against side of panel interleaved with slates. Fix soaker using a nail.

6



Push top flashing into seal.

7



Starting at bottom, push soaker covers (5) into rubber seal at side of panel. The edge with a return should be pushed into the seal.

Clearline®

## Viridian Solar

Viridian Solar  
Brook Lane  
Bassingbourn  
Cambridgeshire.  
SG8 5NT

T 01763 853 007  
F 01763 853 001

[support@viridiansolar.co.uk](mailto:support@viridiansolar.co.uk)  
[www.viridiansolar.co.uk](http://www.viridiansolar.co.uk)

