

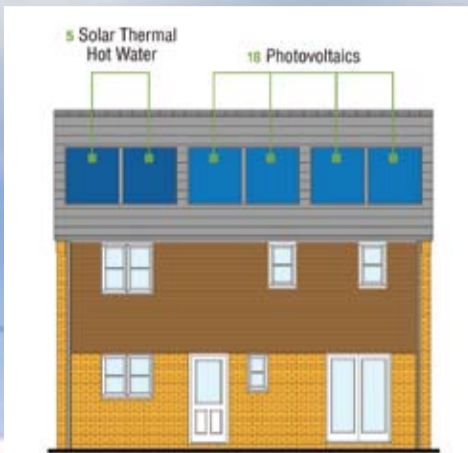


Larkfleet Group  
Sustainability House

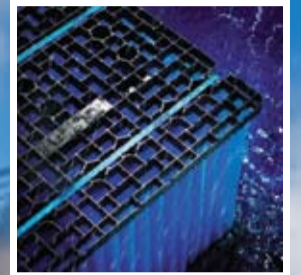


Wind Turbines can help reduce carbon emissions and electricity consumption by producing power for use in the home and exporting any surplus to the national grid.

Wind Turbines convert wind power to electricity by a permanent magnet generator and can be situated in any open, windy area near to your home or an out building. They are available in a variety of sizes and power outputs depending entirely on your requirements.

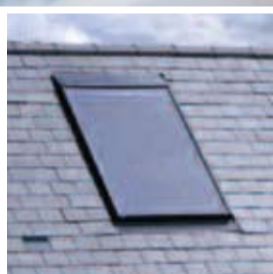


Electricity can be generated directly from the sun using Photovoltaic Panels installed in a sunny position on a roof. However, the sun doesn't have to be shining for them to work – any daylight will generate electricity.



The Rainwater Harvesting Installation collects rainwater from the roof and collects it before storing it for non-potable uses such as Toilet flushing, Washing Machines and Irrigation etc. Typically the installation can be expected to provide nearly half a household's total water consumption.

## SPACE AND HOT WATER HEATING SOLUTIONS



Solar thermal water heating devices make use of free energy from the most abundant source we have – the Sun. Baxi provide a complete Solar Package which enables you to easily fit the whole system. All the components are covered by a 2 year parts and Labour Warranty.



2 year parts and Labour Warranty\* giving customers complete peace of mind through our heateam.



This house has been designed and constructed by Kestrel Timber Frame Ltd, the building envelope is made from PEFC timber sheathed in OSB (Orientated Strand Board) and covered with Protect TF200 Thermo breather membrane.



The design utilises an engineered joist system for the 1st floor with a chipboard deck. The roof structure are trussed rafters.

Kestrel commission and manage the whole design and certification process using specialist timber frame designers and structural engineers.



Outdoor heat only unit, easily sited externally without taking up useful indoor space.

Self-contained, one piece heat pump with a closed and pre-charged refrigeration circuit – no need for external refrigerant pipe work or refrigerant handling during installation.



Baxi have developed a Micro-CHP unit, the Baxi Ecogen, which will generate useable electricity as well as heat for the home.

## WATER SAVING



Contemporary WC's have dual flush cisterns. The water saving benefit is a saving of 33% of water when you use the small flush button.



RestrictorTaps can use as much as 8 to 9 litres of water per minute depending on water pressure.

Aerated nozzles give a softer water feel, ideal for hand washing.



Resistance is felt in the lever when the tap is delivering half the potential water flow. When the lever 'clicks' the tap delivers 100% flow, this cuts water usage by 50% if the lever is stopped before click.



A restrictor reduces the amount of water used. The restrictor is inserted between the valve and shower kit and limits the water flow to 9 litres per minute at 3 bar. A typical 7 minute shower with water restrictor can save between 40 and 80 litres of water compared to having a bath.

The Larkfleet Group Sustainability House has been developed to demonstrate the key points to be addressed in actively compliance with the Code for Sustainable Houses.

As you visit the house you will be able to build up an understanding at all the individual components required to meet the code at visitors levels in a cost-effective way.

**SIG** Sustainable Solutions

[www.eviee.co.uk](http://www.eviee.co.uk)